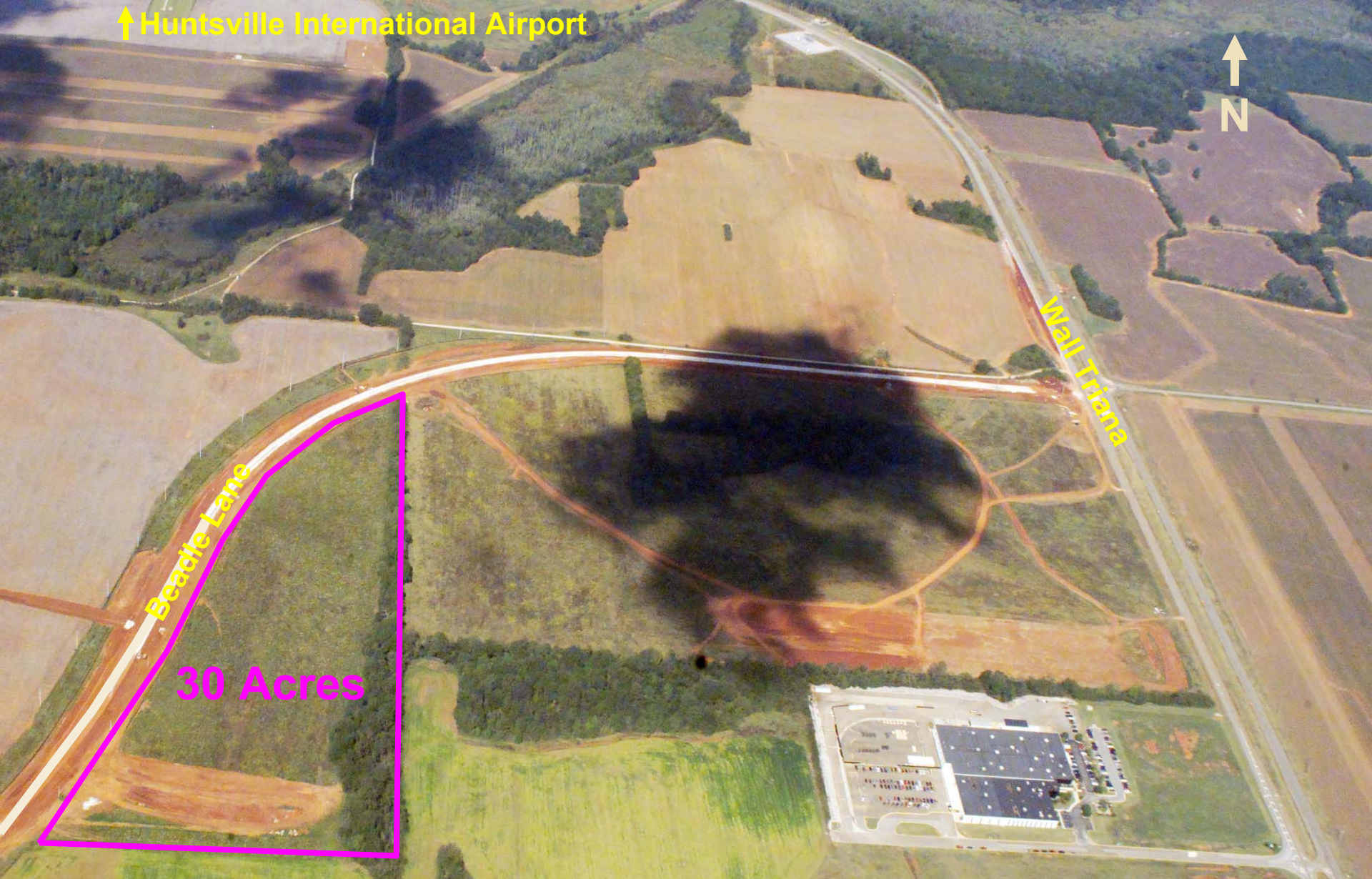


Street Address	Beadle Lane, Jetplex Industrial Park South
For Sale	Yes - \$45,000/acre
For Lease	No
Total Acreage	30
Infrastructure information	
Distance to Major Interstate	I-565 = 4 miles (apx); I-65 = 11 miles (apx)
Distance to Major Highway	Hwy 72 = 6 miles (apx)
Distance to Major Commercial Airport	Huntsville International = 3 miles (apx)
Distance to Port	Decatur = 20 miles (apx)
Rail Access	No
Utilities	
Electric Service	Yes - Huntsville Utilities
Natural Gas If yes, line size	Proposed - Huntsville Utilities
Sewer Service If yes, line size	No
Water Service If yes, line size	Proposed - Huntsville Utilities
Contact Information	
<p>Brooks Kracke - Director, Jetplex Industrial Park Huntsville-Madison County Airport Authority 1000 Glenn Hearn Blvd., Box 20008 Huntsville, Alabama 35824</p> <p>(256) 772-9395 - Phone (256) 772-0305 - Fax brooks@hsvairport.org www.hsvairport.org</p>	

↑ Huntsville International Airport



Beadle Lane

Wall Triana

30 Acres

**Jetplex Industrial Park South – Beadle Lane
Huntsville, Alabama**

